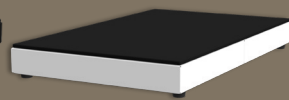


# HOT PLATE ECO

The Hotplate Eco is intended for joint use with the Eco/ Vario lighting series. Together, the hotplate (bottom heat) and the heat lamp (top heat) provide the necessary temperature maintenance for keeping individual portions and small containers warm.



- Black matt



- White matt



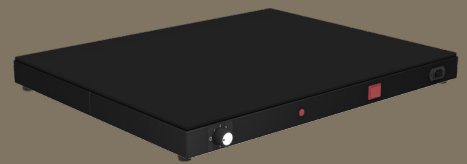
- Copper metallic



- Gold-brass metallic

## TECHNICAL DATA

Material: 4 mm Schott glass ceramic  
Dimensions: 1/1 GN: 330x530x60 mm  
2/1 GN: 660x530x60 mm  
Body : Stainless steel powder coated  
Electric: Connected load 230 V/ 50 Hz  
Temperature: +20 °C bis +90 °C, 6 Temperature levels  
Heating Power: 850Watt (1/1 GN) und 1.520Watt (2/1 GN)  
Equipment: Cable 2,0 m, plug type F, toggle switch  
On/off, rotary control, pilot lamp



In combination with the Eco and Vario lighting series



 **livecookintable®**

Design made in Germany