

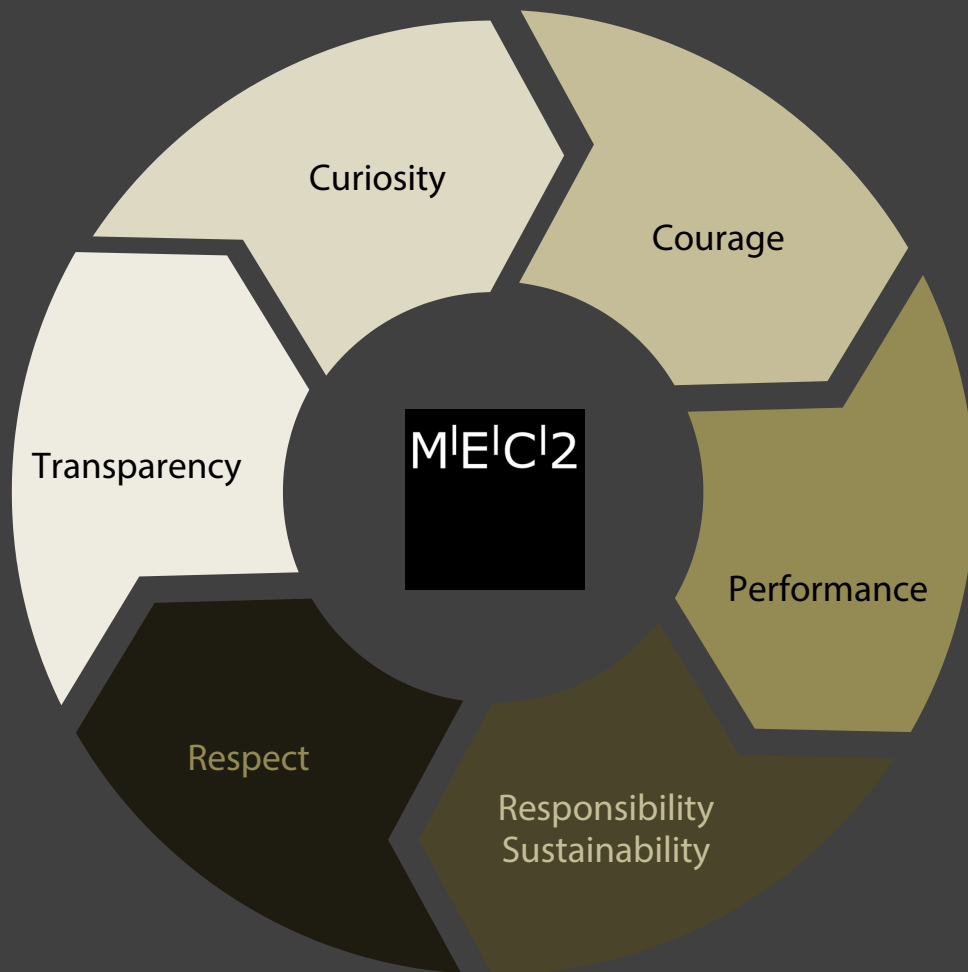
A close-up photograph of a person's hands, palms up, holding a small green plant with dark soil. The person is wearing blue jeans. The background is a blurred forest floor with green foliage and brown leaves. The text "OUR COMMITMENT TO THE PROTECTION OF OUR NATURE" is overlaid in white, bold, sans-serif font at the bottom center.

**OUR COMMITMENT
TO THE PROTECTION OF OUR NATURE**

MIEIC'2



01 | OUR COMPANY GOALS



OUR VALUES

THE FOUNDATION OF OUR SUCCESS



Reliability & Respect

Reliability creates trust. Teamwork is the basis for successful management. Teamwork demands that promises are kept. Respect means appreciating performance - dealing fairly with people.



Curiosity

Curiosity leads to trust, credibility and respect.



Courage

Courage means taking risks and demonstrating willingness to act.



Performance

Performance enables our entrepreneurial success. Great products are the result of top performance.



Responsibility Sustainability

Responsibility determines our entrepreneurial actions. Taking responsibility brings recognition and acceptance of the customers.



Transparency

Transparency allows mutual trust.

WE SAY NO TO PET

PET water bottles end up as microplastics that pollute our oceans. We say no to PET.





02 | PRODUCT MATERIALS

RESOPAL HIGH PRESSURE LAMINATE

Our wood manufacturer Resopal invented laminate as the most environmentally friendly material. It is made from 65% paper with high recycling share and 35% water-based resins.

It is PEFC™ or FSC® certified (FSC® C104603) and extremely durable, so wood has enough time to grow back. It can be thermally recycled and thus contributes to energy recovery.

CERTIFICATIONS



The mark of responsible forestry



www.pefc.de



SCHOTT WORLD MARKET LEADER IN GLASS CERAN

Environmental Responsibility. Schott has set new sustainability standards in the glass industry: By 2030 it will be the first climate neutral glass manufacturer.

SCHOTT
glass made of ideas



CONTINENTAL VEGAN LEATHER:

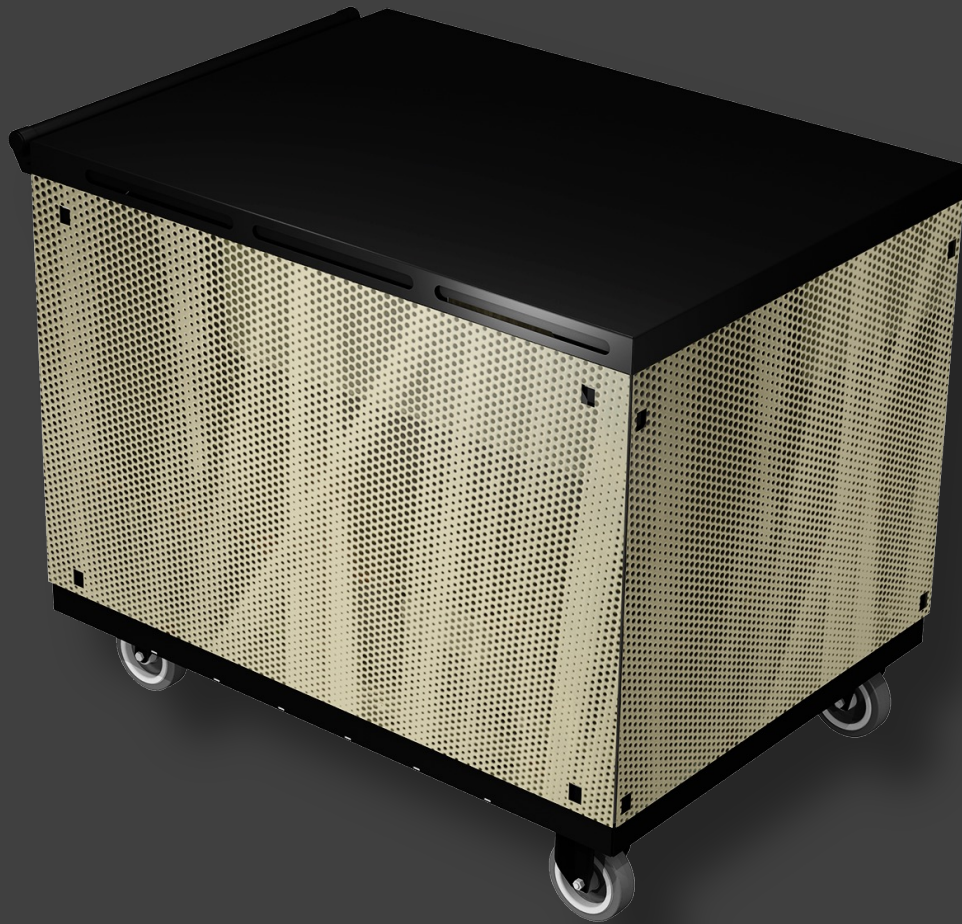
With Skai Evida, Continental has developed a material that is no longer made synthetically but from natural and renewable raw materials, including cotton and eucalyptus fibers.



EGO WORLD LEADING INDUCTION COMPONENTS

Sustainable production protects the environment. By using renewable energies, with fewer primary raw materials and use of secondary raw materials. Use of environmentally friendly materials through new production techniques and processes.





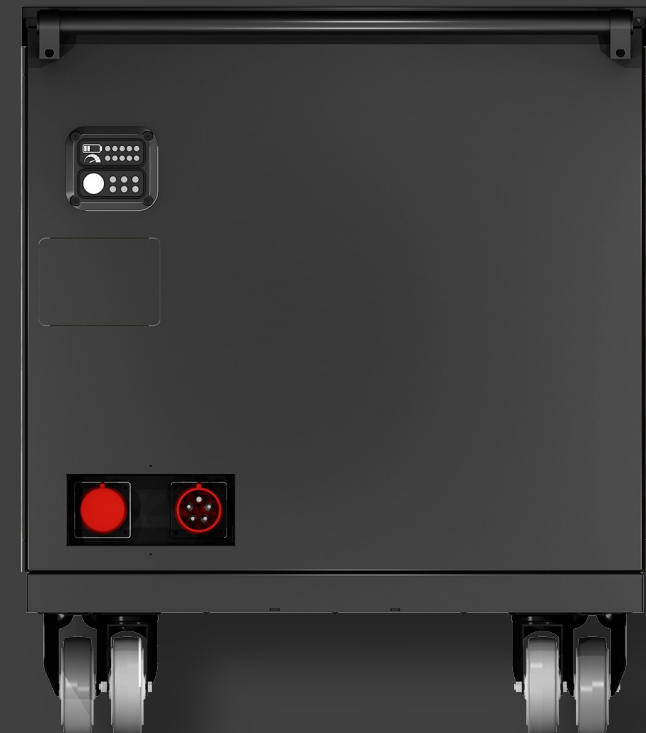
MEC2 BATTERY CART

Innovative, sustainable battery concept

Mobile power supply: green, sustainable,
problem-solving

MEC2 only uses upcycled batteries from electric cars for their battery cart and thus gives them a second productive life.

The modular and mobile system combines efficient, clean and sustainable energy storage.




OUR COMMITMENT TO SUSTAINABILITY


We want to be a part of the solution



Very long
product life




Highly efficient
devices




Sustainable
production
processes



360° Food Logistic Concept
For less equipment use –
but highest performances



"Cradle to Cradle:" We use
stainless steel and wood ... as
durable and hygienic materials.
All perfectly made for 2nd life
use after a long product life.



100% Made in
Europe, Germany

Passion that builds Excellence

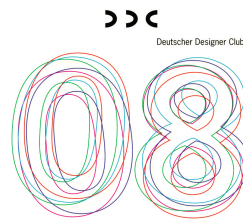
International Product Design Awards:

Red Dot Product Design
iF Product Design
Gute Gestaltung
Deutscher Design Preis
...



Industry Awards:

HOST Smart Lable
Internorga Innovation
Dubai Hotel Show Innovation
...



MEC2 GmbH

Design & Engineering
Grosse Hub 7d, 65344 Eltville

PHONE NUMBER

+49-6123-2080 – 222

EMAIL ADDRESS

info@mec2.de