



CHURCHiLL



COLOUR TRENDS PORTFOLIO  
2025 - 2026



# WELCOME TO THE CHURCHILL COLOUR PORTFOLIO

Where we offer inspiration on combining colours and textures to create striking tabletop looks, in line with the latest trends in hospitality interior design. Use this tool to explore muted, complementary tones or bold colour clashes, finding ideas to help create your unique tableware style.







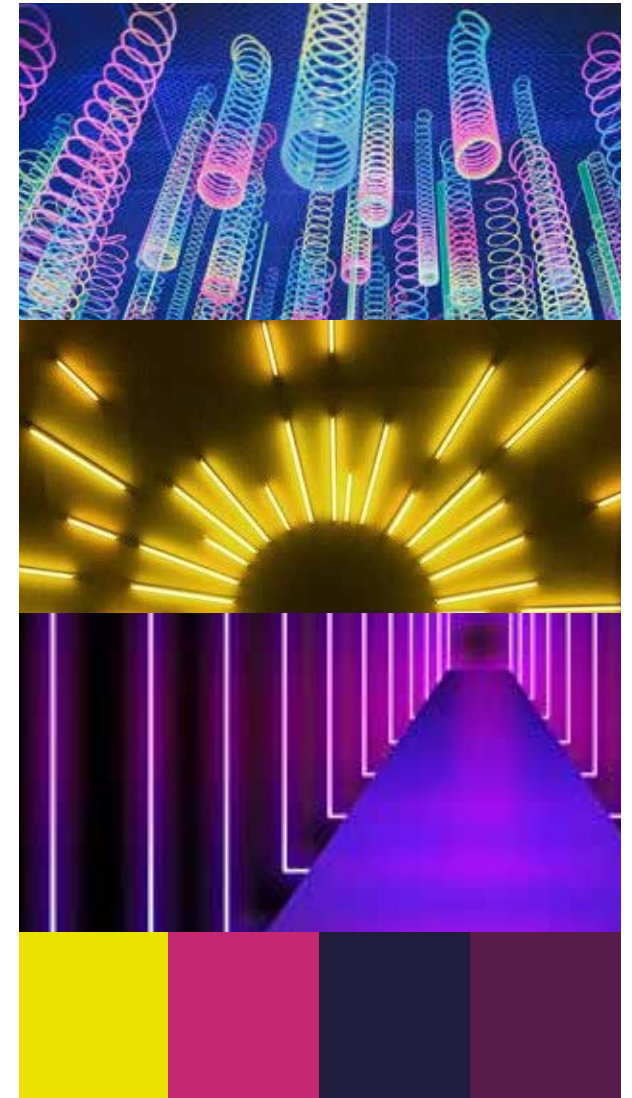
## REPLENISH

Discover the colour palettes inspired by natural colours and textures from desert lands to elemental neutrals.



## NEO - RETRO

Take a trip down a familiar path and experience the look and feel of a retro inspired colour story in today's world.



## IMMERSIVE

Immerse yourself in the saturated colours and tones from altered realities ranging from a vibrant rainforest to a neon world.





REPLENISH



As the digital world becomes an integral part of our daily lives, cultivating a genuine connection to raw materials, ancestral lands, and natural sanctuaries will evoke a sense of nostalgia for simpler times, providing grounding and rejuvenation.

Designers are therefore seeking a return to simplicity by using natural textures, colours and materials to replenish our senses and soothe our minds, bringing a wellness orientated intention with the use of different colour palettes.

The following tabletop colours reflect these new trends.





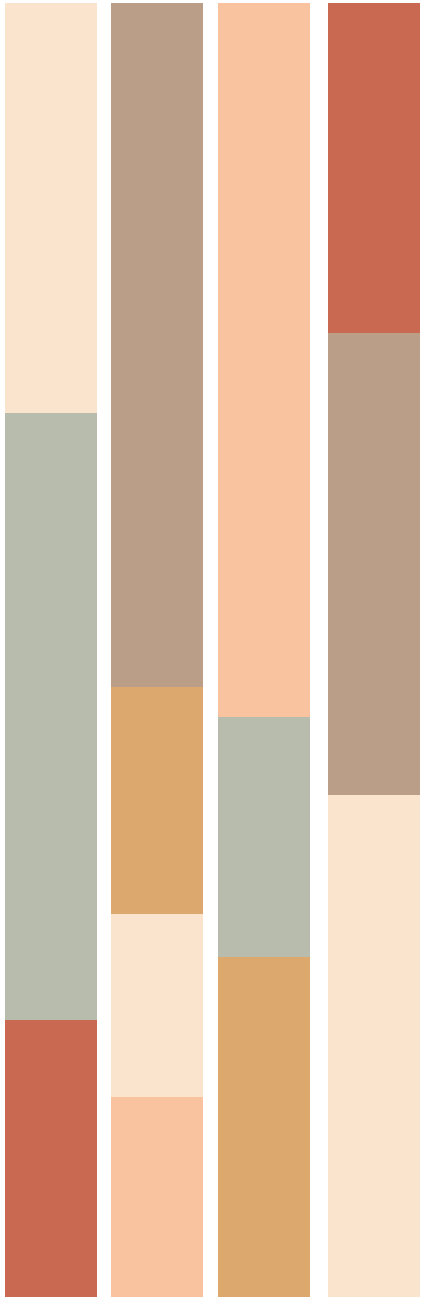
# REPLENISH

Inspired by the hues and textures of the desert, this palette seeks to deepen our connection with raw natural materials and ancestral lands, creating a sanctuary for the senses.

This colour story blends warm, muted tones of peach, taupe, and sand to evoke a sense of calm. Enhance the sandy shades with Stonecast Patina Burnished Green and introduce a touch of Patina Rust Red for a vibrant hint of colour.







Combine sandy tones with muted greens and bright terracotta for a calming desert inspired palette.



**ENVISAGE**  
Erosion Sand



**STONECAST PATINA**  
Rust Red



**STONECAST PATINA**  
Burnished Green



**STONECAST**  
Truffle



**STONECAST RAW**  
Green



**STONECAST PATINA**  
Antique Taupe



**STONECAST**  
Spiced Orange





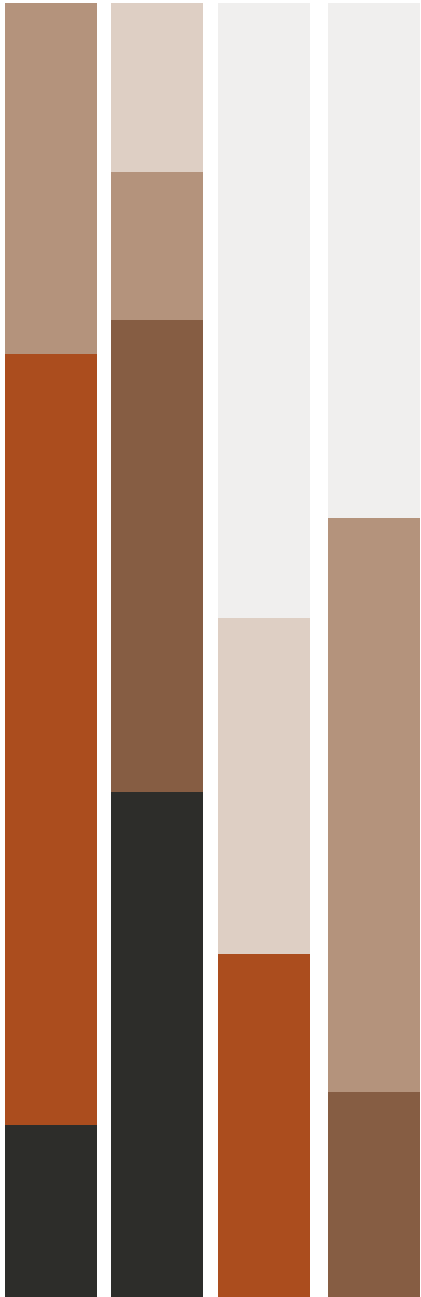
# REPLENISH

**Interior design of both hospitality, home and work places has the ability to bring comfort and equilibrium during times of change or turbulence.**

Designers are creating spaces focused on wellness and low stimulation, areas with unintrusive energy where consumers can make meaningful connections. Soft and neutral colour palettes, raw materials and natural light adorn hybrid spaces intended for work, rest or socialising. Create a neutral mix of off whites with Patina Antique Taupe, and Agate Grey in Studio Print designs. Add warmth to the palette with deep browns from Studio Prints Stone and Emerge.







Create a cosy space with warm neutrals like browns and terracottas. Introduce lighter taupes and creams for a more tranquil vibe.



**STUDIO PRINTS KINTSUGI**  
Agate Grey



**STUDIO PRINTS FUSION**  
Agate Grey



**STONECAST RAW**  
Brown



**STONECAST RAW**  
Terracotta



**EMERGE**  
Cinnamon Brown



**INKED ELEMENTS**  
Dune

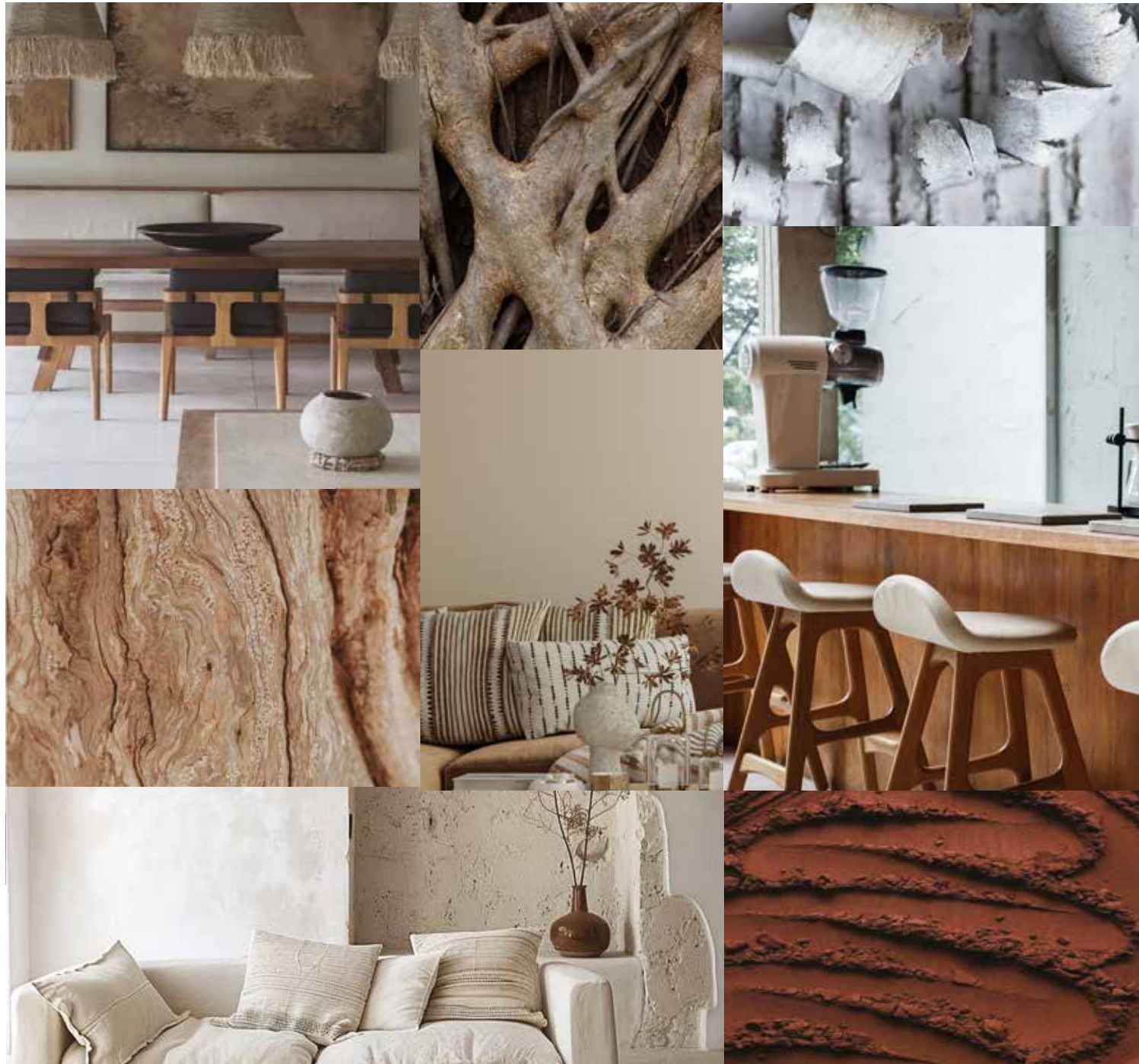




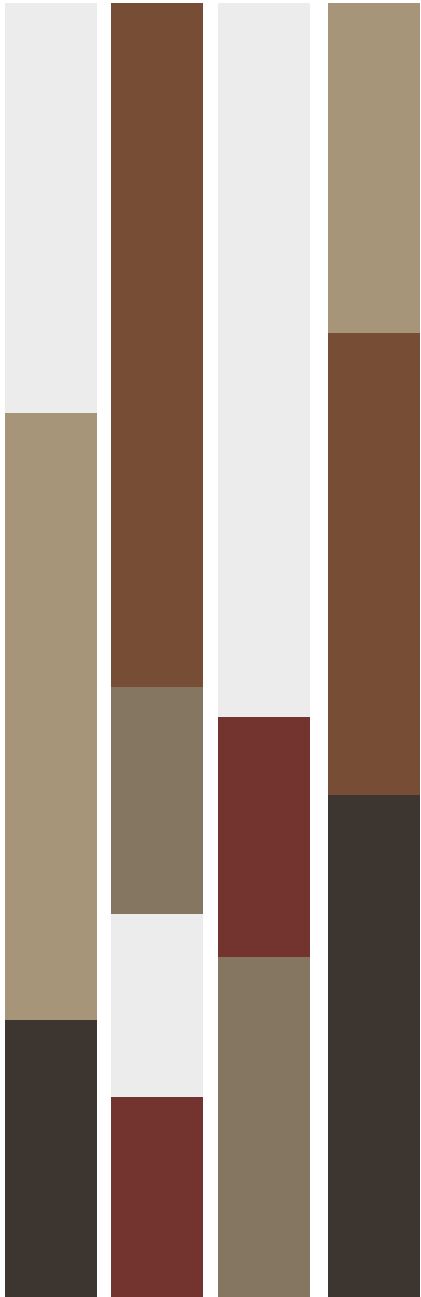
# REPLENISH

Earthy browns and wooden textures continue to feature strongly in hospitality interiors, creating a warm and rustic atmosphere.

Create this colour palette using dark grounding pieces combined with lighter grey tones and warmer cocoa browns. Use a mixture of dark Stonecast Patina and Stonecast Raw plates blended with Studio Prints Kintsugi Accents for a striking mixture of tones and textures.







Mix muted taupe colours, warm coppery reds and textured Raku and Kintsugi patterns for a grounding palette.



**STONECAST RAW**  
Black



**STUDIO PRINTS KINTSUGI**  
Coral



**STUDIO PRINTS KINTSUGI REVERSE**  
Quartz Black



**STONECAST PATINA**  
Vintage Copper



**STUDIO PRINTS KINTSUGI ACCENTS**  
Quartz Black



**NOURISH**  
Tokyo Black



**INKED ELEMENTS**  
Dune





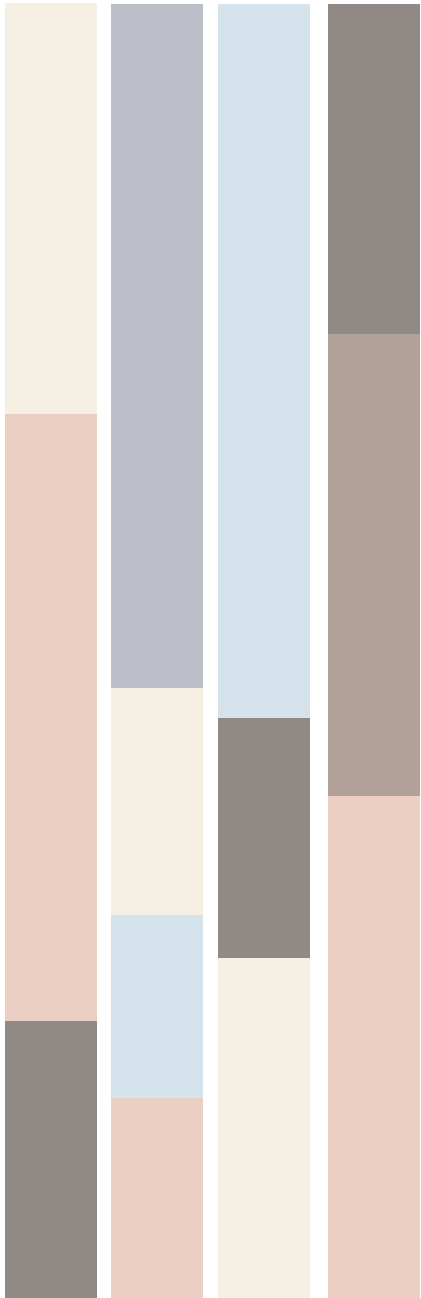
# REPLENISH

**Elemental neutrals create a calming table-scape, evoking serene early morning tones and minimalist spaces, ideal for a simple food backdrop.**

Build this colour palette using a range of neutral tones that will add diversity and interest to the table. Combine Inked Delta Grey, and Elements Dune with Stonecast Truffle and Peppercorn Grey to create this minimalist palette.







Mix a range of soft neutral tones that include hints of pale blue and pink paired with stronger greys.



**INKED DELTA**  
Grey



**STONECAST CANVAS**  
Grey



**STONECAST**  
Truffle



**STONECAST**  
Barley White



**INKED ELEMENTS**  
Dune



**STONECAST**  
Peppercorn Grey



**STONECAST CANVAS**  
Coral





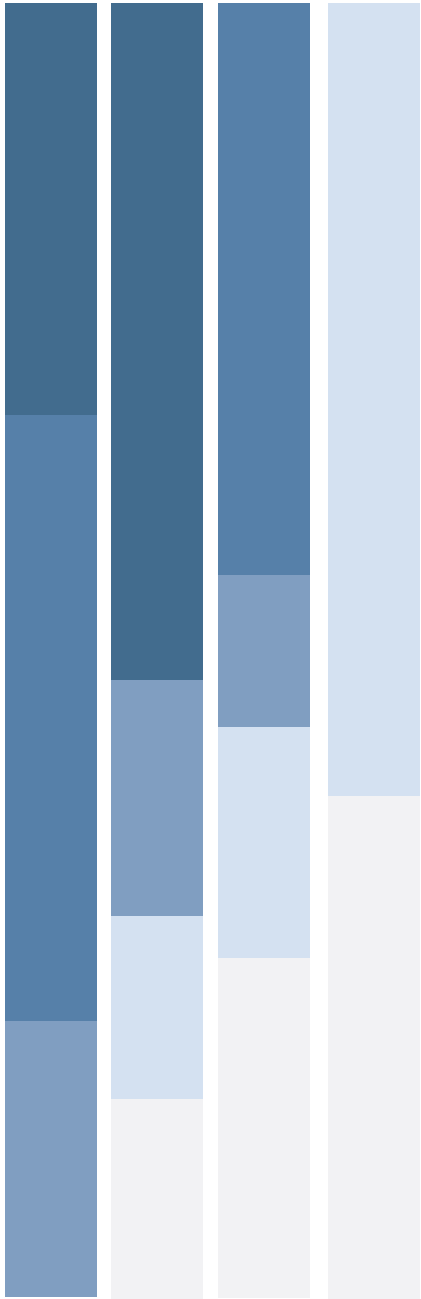
# REPLENISH

**Tranquil tones of dusky azures and powder blues create a soft and soothing atmosphere, ideal for spaces designed for relaxation.**

Lighter shades of blue promote a sense of mental clarity and calm, making it an ideal trend for wellness spaces. Soft blues like Stonecast Duck Egg mix beautifully with fresh greys or whites in Era, Alchemy Smoke or Stonecast Canvas, creating a serene tabletop mix.







Mix dusky azure tones with power blues or cool greys for a calming look.



**ALCHEMY SMOKE**  
Grey



**STONECAST**  
Duck Egg Blue



**INKED ERA**  
Grey



**STONECAST CANVAS**  
Grey



**STONECAST**  
Blueberry



**STONECAST**  
Barley White

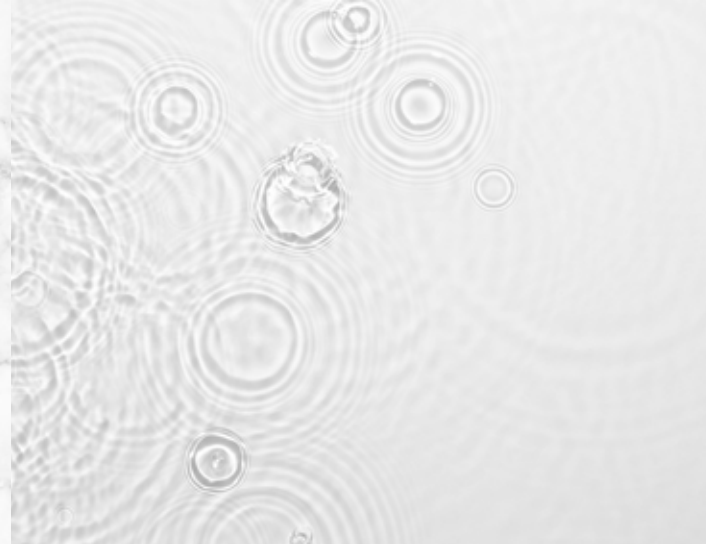




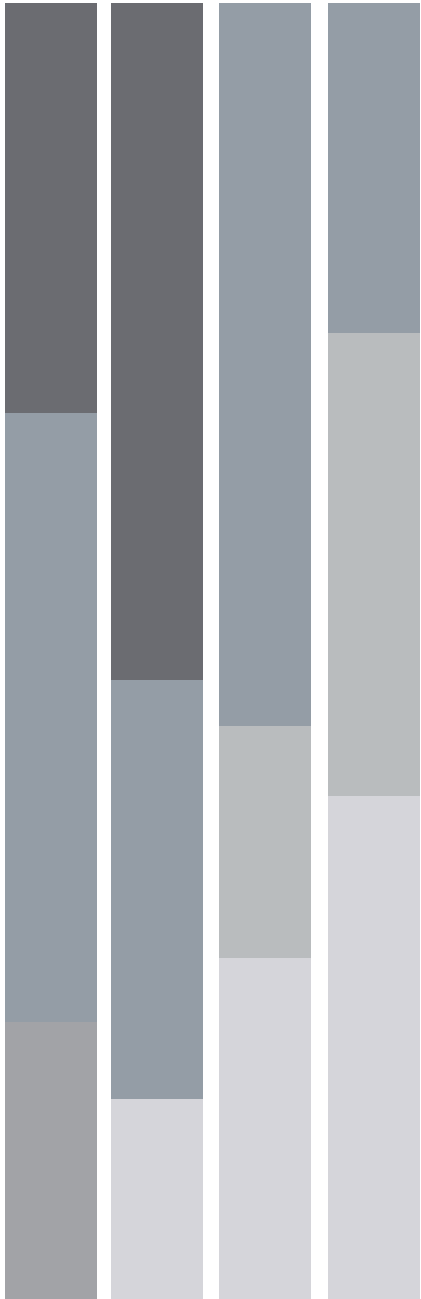
# REPLENISH

**Soft and minimal grey tones create a clean, serene and balanced atmosphere in interiors.**

Light grey tones mixed with simplistic white are well suited for interiors intended to promote relaxation and mindfulness. To capture this trend on the tabletop try Stonecast Canvas Grey mixed with minimalist Inked Era or Alchemy Smoke. To add texture introduce Studio Prints Raku in the contemporary Jasper Grey colourway.







Mix different shades of grey for a contemporary but tranquil colour palette.



**STUDIO PRINTS RAKU**  
Jasper Grey



**ALCHEMY SMOKE**  
Grey



**INKED ERA**  
Grey



**STONECAST CANVAS**  
Grey



**ENVISAGE NATURAL**  
White



**STONECAST**  
Peppercorn Grey





# REPLENISH

Inspired by the natural world, deeply saturated hues such as moody ocean blues, evoke a sense of luxurious serenity.

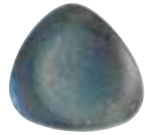
Rich shades of blue create depth and a sense of calm in hospitality interiors. Complement this look with dusky blues in Stonecast and Elements, or add a glint of metallic with Studio Prints Astro. Or enhance an air of opulence with contemporary patterns Tide and Alchemy Smoke.







Go bold but sophisticated with a combination of dark tones or lighten the palette with more dusky shades.



**STUDIO PRINTS ASTRO**  
Blue



**ALCHEMY SMOKE**  
Black



**STONECAST**  
Blueberry



**ELEMENTS**  
Coast



**INKED TIDE**  
Black



**STUDIO PRINTS HOMESPUN CHROMA**  
Twilight





A Neo-Retro interior scene. On the left is a bright orange, tufted armchair with light wood legs. To its right is a light blue, ornate cabinet with a dark wood top. On the cabinet sits a vintage gramophone with a large brass horn, a stack of vinyl records, and a small potted plant with red flowers. The wall behind the furniture is white and features two framed artworks of colorful umbrellas. A patterned rug is on the floor.

# NEO - RETRO



Building on last years theme 'Back to the Future', Neo – Retro continues to tell the story of heritage designs, combining the feeling of nostalgia and comfort with renewal.

There is a strong interest in reconnecting with vintage stories as they provide familiarity in turbulent times and offer a chance to reconnect with our shared heritage. These styles are revived for today's needs in what has been termed as 'Newstalgia'.

The following tabletop colours reflect the evolution of these retro stories.





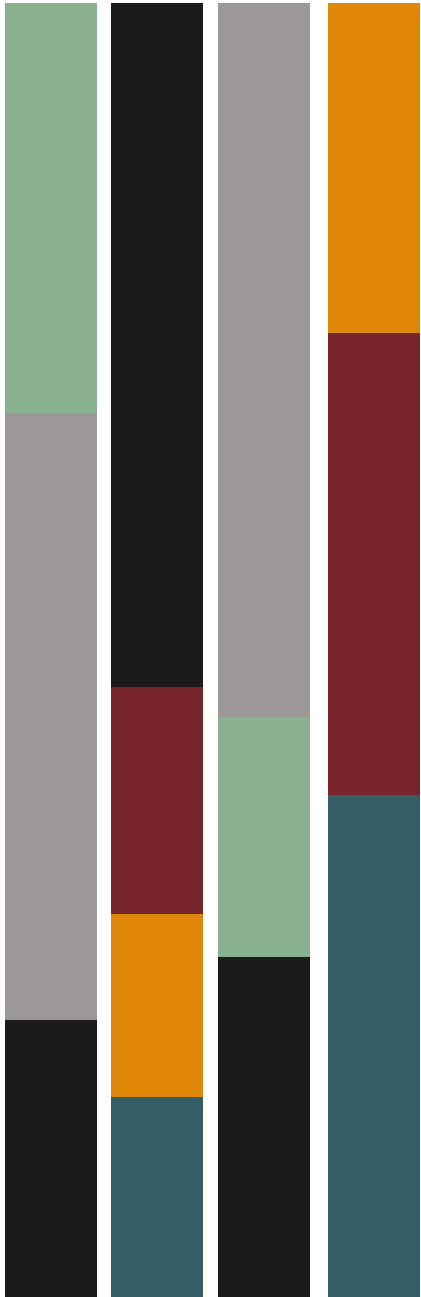
# NEO-RETRO

**Dramatic colours create a modern vintage look and feel, inspired by the opulence and maximalism of the Art Deco era.**

Opulent colours are paired with sophisticated teal and amber luxe tones. This look can include dark and striking contrast patterns such as Kintsugi and Tide to add a touch of elegance. For extra vibrancy, add Stonecast Tangerine and Java Blue.







Create a striking colour story mixing strong textured pieces with teal blues, pistachio greens and amber hues.



**STONECAST**  
Tangerine



**NOURISH**  
Tokyo Black



**STONECAST**  
Sage Green



**STONECAST**  
Java Blue



**STUDIO PRINTS RAKU**  
Agate Grey



**STONECAST**  
Berry Red



**INKED TIDE**  
Black





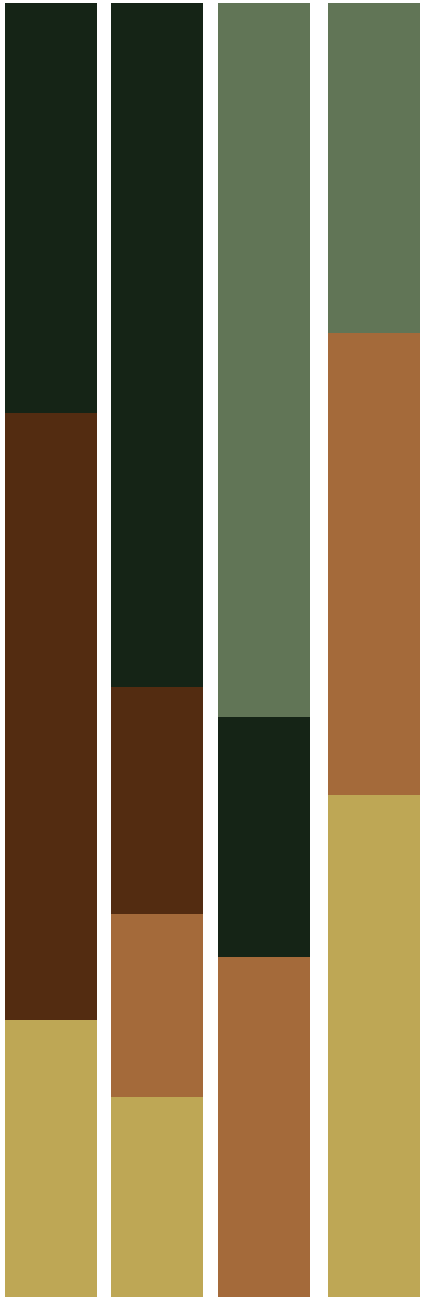
# NEO-RETRO

**Blending vibrant bold hues with more subdued and earthy tones creates a mid-century look but with a natural feel.**

Vibrant accent colours such as mustard yellow are combined with tan leather and metallic finishes like copper or brass. Incorporating botanical elements brings in deep green tones and creates the natural vibe. Try the rich Sorrel and Sage Greens in Stonecast with pops of colour from Mustard Seed Yellow. Add Patina Vintage Copper for a metallic glint.







Combine earthy greens with warm yellow and orange tones, creating a mid century look but with a natural feel.



**STONECAST**  
Mustard Seed Yellow



**STONECAST PATINA**  
Vintage Copper



**STONECAST CANVAS**  
Natural



**STONECAST**  
Sorrel Green



**INKED TIDE**  
Gold



**STONECAST**  
Sage Green





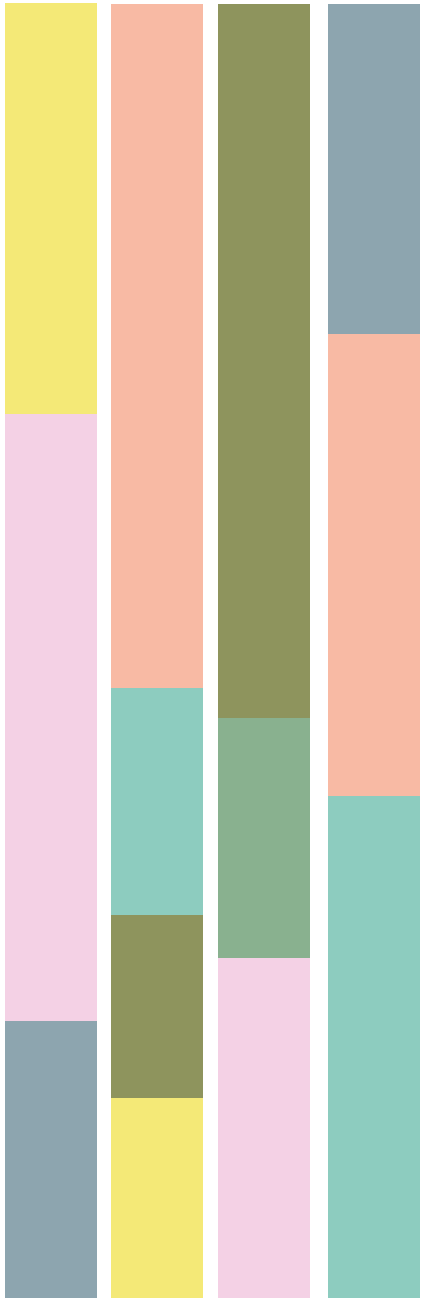
# NEO-RETRO

**Pastel nostalgia tones add a touch of playful fun to interiors and evoke a retro vibe of old school Parisian cafés and retro diners.**

Pastel colours continue to be popular in cafe culture and bring a sense of care free fun in the everyday. Create this playful palette with a combination of Stonecast colours including Petal Pink, Mint and Lavender. For textural pieces use Studio Prints Raku Quartz Pink, and Jade Green mixed with Stone in Aquamarine.







Create a fun and playful palette by combining a range of pastels to capture a nostalgic vibe.



**STONECAST RAW**  
Green



**STONECAST**  
Mint



**STONECAST**  
Peppercorn Grey



**STONECAST**  
Mustard Seed Yellow



**STONECAST**  
Petal Pink



**STONECAST**  
Sage Green



**STONECAST**  
Lavender





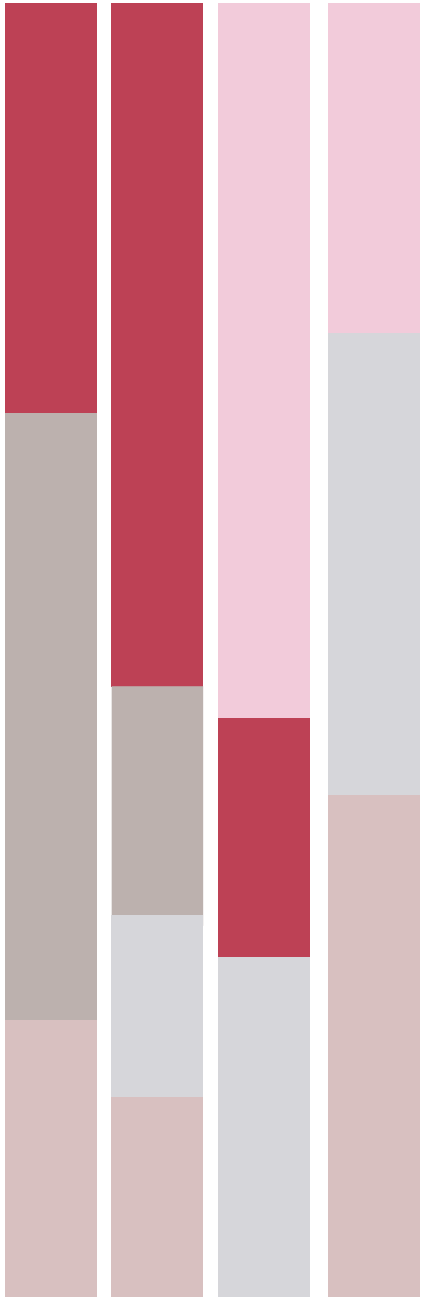
# NEO-RETRO

**Soft pastels like pale pinks and blush tones create a retro vibe but with calming sense of lightness and fun.**

Whimsical and nostalgic, shades of pink continue to be popular in hospitality interiors, drawing inspiration from the vintage charm of the 1950's and 1960's. Choose vibrant pinks in Stonecast and Studio Prints Raku, or softer blush tones in Stonecast Canvas and Stonecast Raw. Pair with retro-inspired pattern Era for a truly nostalgic look.







Mix vibrant pastel pinks or soft blush tones with taupes for a whimsical and nostalgic vibe.



**STONECAST**  
Petal Pink



**STONECAST**  
Barley White



**STONECAST**  
Nutmeg Cream



**INKED ERA**  
Grey



**STONECAST CANVAS**  
Coral



**STUDIO PRINTS RAKU**  
Rose Quartz Pink

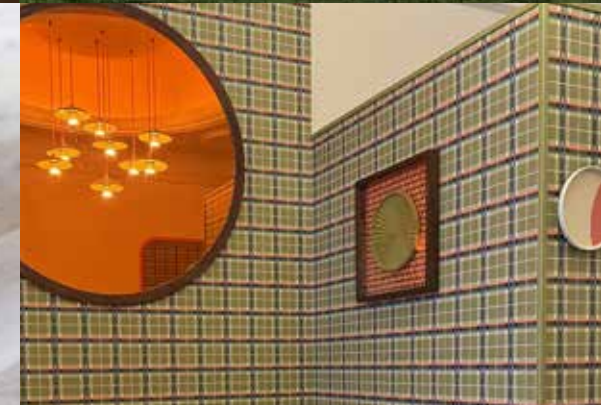




# NEO-RETRO

**A retro mid century colour story creates a comforting and familiar atmosphere, reminiscent of a 1970s interior.**

Wooden details, subtle geo patterns and textured rugs all create a retro vibe that takes you back to the 1970s. Build this tabletop palette by combining Stonecast Patina Rust Red and Deep Purple with Nourish Petra Sand for a tonal brown palette and Stonecast Mustard Yellow for a strong retro feel.







Capture the essence of the 1970s with an eclectic mix of bright yellows and greens paired with more muted purple and sand tones.



**STUDIO PRINTS RAKU**  
Garnet Orange



**NOURISH**  
Petra Sand



**STONECAST**  
Samphire Green



**STONECAST PATINA**  
Deep Purple



**STONECAST PATINA**  
Rust Red



**STONECAST**  
Mustard Yellow



**STONECAST PLUME**  
Olive





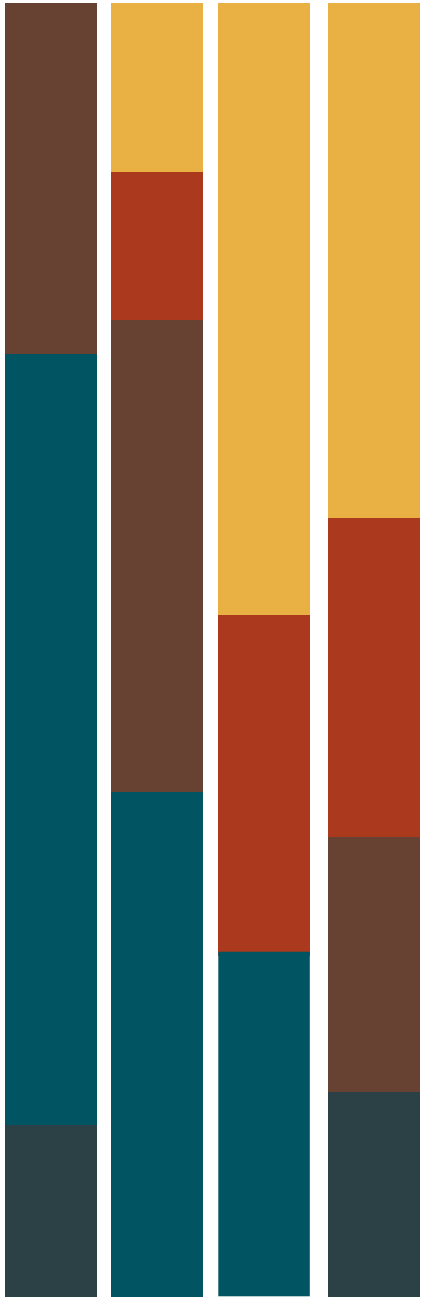
# NEO-RETRO

Designers continue to draw inspiration from the mid-century era, including the abstract forms and warm colour palettes of the 1960's and 1970's.

Wood panelling and tactile materials such as velvet and leather are increasingly paired with elements inspired by the space-age era such as spherical shapes and curved lines. Combine the warm tones of Stonecast Mustard Seed, Patina Rust Red and Vintage Copper with deep Patina Teal. Enhance the mid-century feel with earthy browns in Stonecast Raw and Studio Prints Stone.







Combine dusky teals and blues with earthy browns, alternatively add warmth to the palette with burnt sienna tones and mustards.



**STONECAST**  
Mustard Seed Yellow



**STONECAST PATINA**  
Rust Red



**STONECAST RAW**  
Brown



**STONECAST**  
Java Blue



**STONECAST PATINA**  
Rustic Teal



**EMERGE**  
Cinnamon Brown





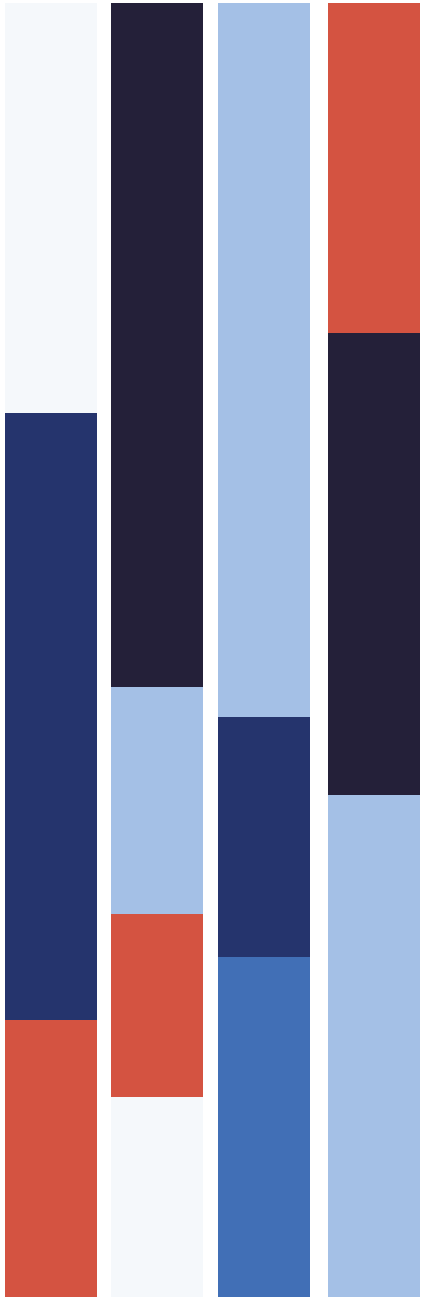
# NEO-RETRO

**Capture the essence of nautical charm with a fresh and breezy tonal palette.**

Cool blues are combined with fresh neutrals for an understated and modern table. Combine Stonecast Plume Ultramarine with Inked Elements Coast for a minimal ocean look, or add a flash of Stonecast Rust Red for a more classic nautical vibe.







Create this cool colour palette with a mixture of blues and neutrals. Add vibrancy by incorporating red flashes of colour.



**STONECAST PATINA**  
Rust Red



**INKED ERA**  
Blue



**STONECAST PLUME**  
Ultramarine



**STUDIO PRINTS HOMESPUN CHROMA**  
Marine



**INKED ELEMENTS**  
Coast



**INKED DELTA**  
Grey



**STONECAST**  
Blueberry







IMMERSIVE



The growing popularity of experience-based events and spaces has led to a demand for more immersive environments. People are looking for multi-sensory escapism, whether through nature or virtual reality.

This trend is evident in restaurants that use unique visual installations to transform into a novel and creative experience. Additionally, the rise of biophilic design brings nature indoors, offering a break from screen time.

The following tabletop palettes show an eclectic mix of immersive futures.





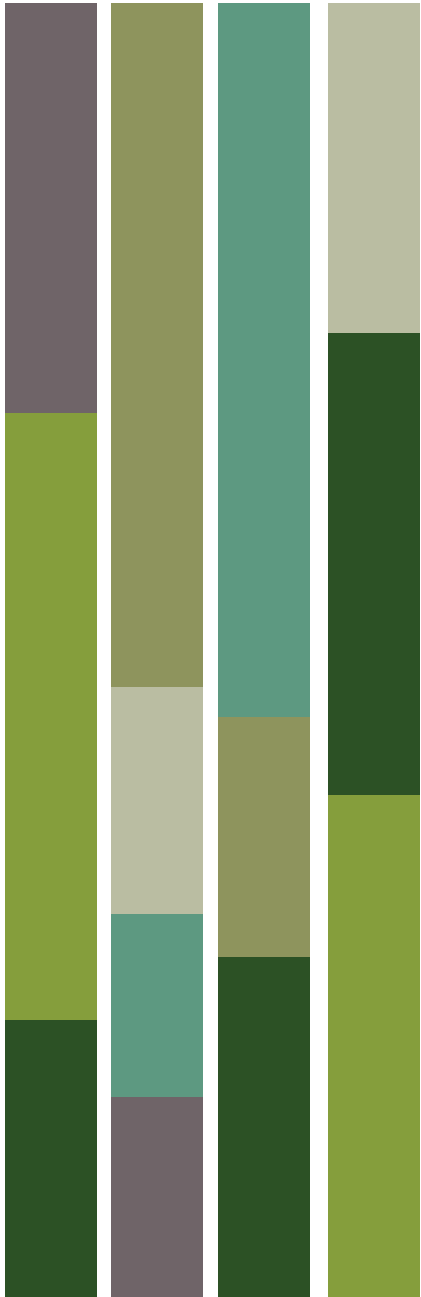
# IMMERSIVE

Biophillic design and nature inspired interiors will continue to dominate in the coming years. From living walls to diverse foliage in restaurant spaces, this theme celebrates the abundance of plants.

Use a variety of tonal greens and neutral browns to create a unique story that celebrates nature. Pair Stonecast Truffle with Inked Elements Fern and Stonecast Samphire for a muted forest palette.







Embrace nature inspired interiors with this colour palette of tonal greens and soft greys.



**STONECAST**  
Sorrel Green



**STONECAST**  
Truffle



**INKED ELEMENTS**  
Fern



**EMERGE**  
Seattle Grey



**STONECAST RAW**  
Green



**STONECAST**  
Peppercorn Grey



**STONECAST**  
Sage Green





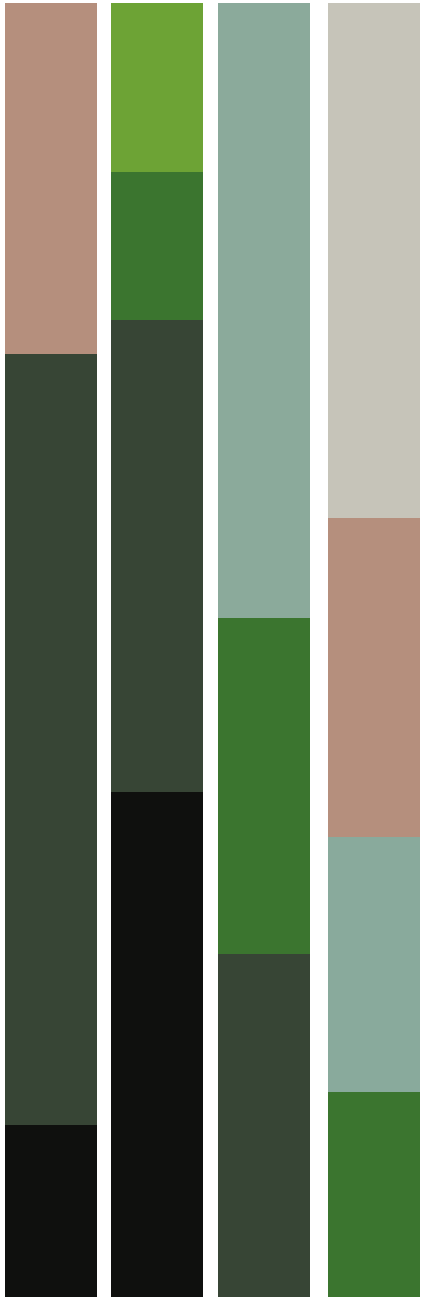
# IMMERSIVE

**Designers create spaces that reconnect consumers with the natural world, feeding the desire to live with intent and consume consciously to protect planet.**

Circular thinking means we're seeing more regenerative or salvaged materials, as well as natural colour palettes intended to be long-lasting and trans-seasonal. Fresh ingredients look great on tableware that emulates the natural world, and green is now a hugely popular tableware choice. Get the look by pairing the greens in Stonecast and Patina with off whites and organic textures like Studio Prints Stone.







Deeply saturated green tones create the rich feel of a dense forest, alternatively use lighter greens paired with taupes and creams for a fresher look.



**STONECAST**  
Sorrel Green



**STONECAST RAW**  
Green



**STUDIO PRINTS KINTSUGI**  
Agate Grey



**STONECAST PATINA**  
Antique Taupe



**STONECAST PLUME**  
Olive



**STUDIO PRINTS FUSION**  
Agate Grey

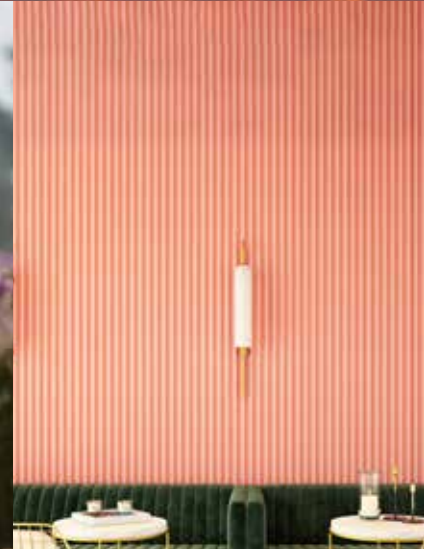




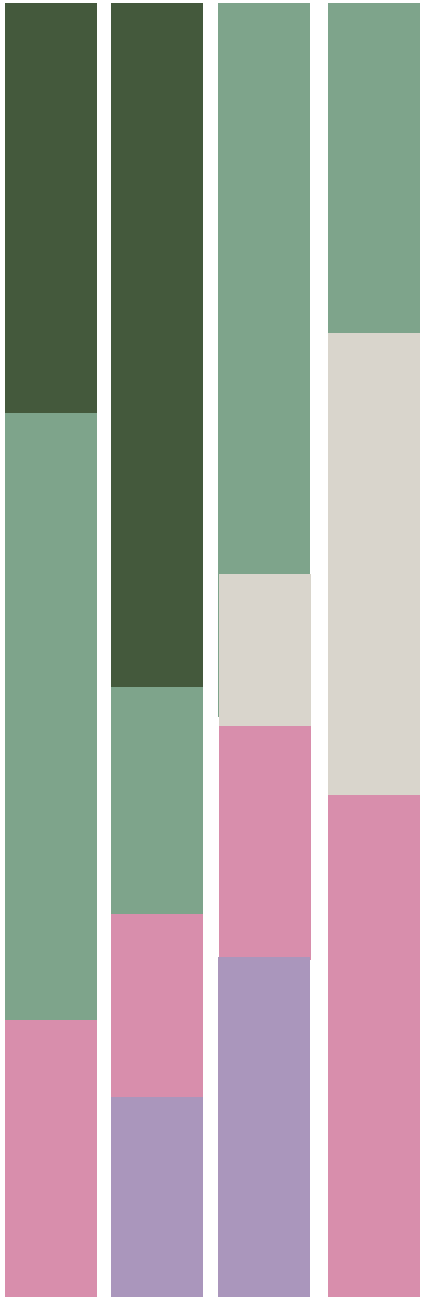
# IMMERSIVE

**Fresh and rejuvenating, the Natural Re-Gen trend celebrates the beauty of nature.**

Designers bring the outside in and create a tropical feel with deep forest or mossy greens, combined with pops of floral pinks and purples. Mix the Stonecast green tones with Petal Pink, Lavender or Studio Prints Raku Rose Quartz. Or for a more earthy vibe mix in Erosion Sand or Stonecast Sage Green.







Combine deep forest or mossy greens with pops of floral pink and lavender tones for a botanical look.



**STUDIO PRINTS RAKU**  
Rose Quartz Pink



**STONECAST**  
Sorrel Green



**STONECAST**  
Lavender



**ENVISAGE EROSION**  
Sand



**STONECAST**  
Sage Green



**STONECAST**  
Petal Pink





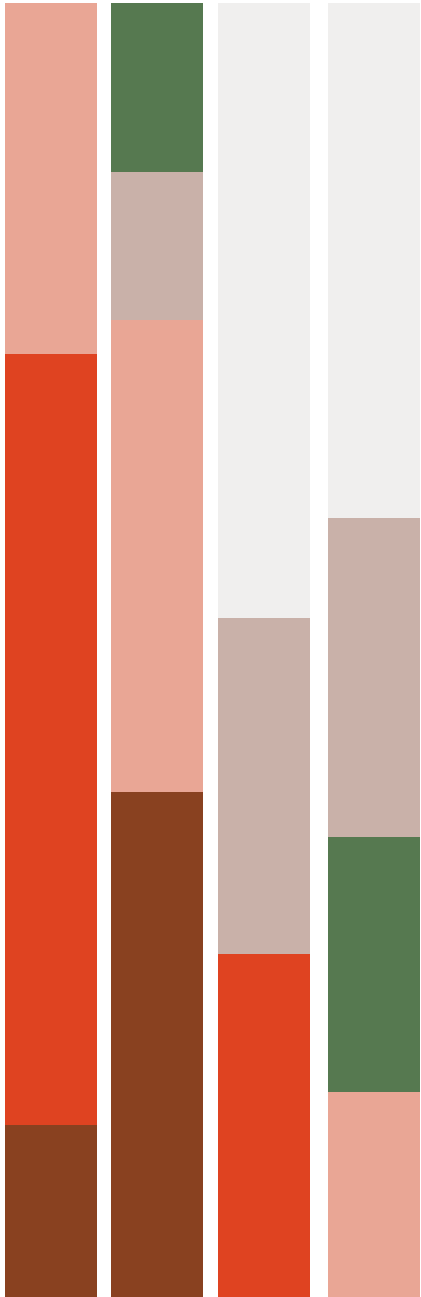
# IMMERSIVE

**Bohemian interior design embodies the trend for wellness, creating relaxed spaces that celebrate free-spirited lifestyles, wanderlust and creative expression.**

Layers of texture, pattern and colour, paired with global influences create relaxed and comforting vibes. While the incorporation of greenery and natural light reduces stress, positively affects mood and improves air quality. Use warm neutrals for a perfect Boho palette, like Patina Terracotta and Raku Agate Grey. Mix in earthy tones like Raw Brown and Patina Antique Taupe, add a splash of natural freshness with Stonecast Sage Green.







Combine browns and blush tones for a laid back boho look, introduce pops of green to create that link with the natural world.



**STONECAST RAW**  
Brown



**STONECAST**  
Spiced Orange



**STONECAST CANVAS**  
Coral



**STONECAST**  
Sage Green



**STONECAST RAW**  
Terracotta



**STONECAST PATINA**  
Antique Taupe





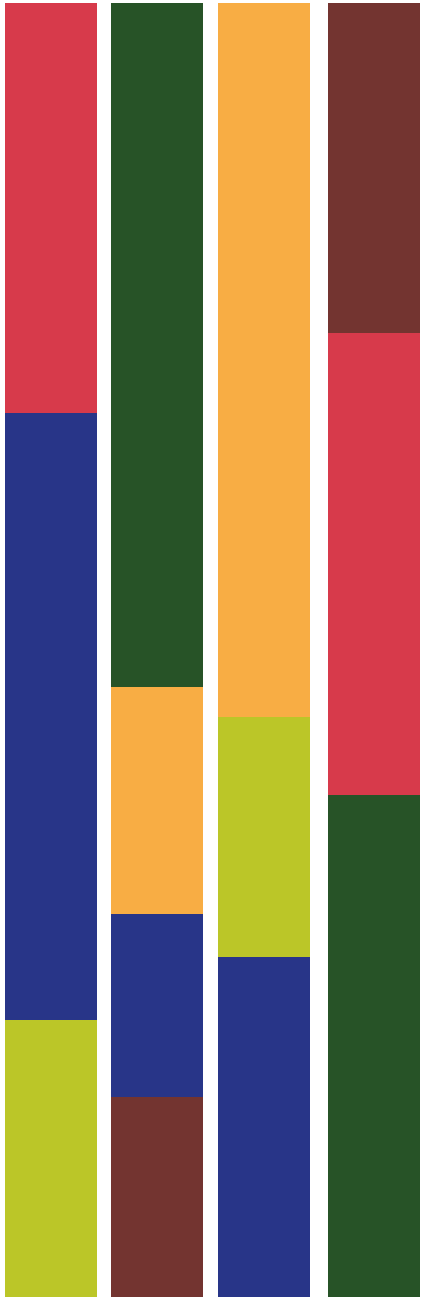
# IMMERSIVE

An eclectic mix of hothouse brights celebrates the diversity of colours found in tropical spaces. Expanding on the theme of nature inspired interiors, this palette maximises on colour.

Being bold and bright will make this colour story come alive. Mix a range of pieces that capture a tropical lagoon with bright foliage. Use Stonecast Aqueous Lagoon, Stonecast Patina Burnished Green and Berry Red to make this tropical palette work.







Celebrate the vibrancy of tropical brights by mixing turquoise blues with bright reds and coppers.



**STONECAST PLUME**  
Ultramarine



**STONECAST**  
Sapphire Green



**STONECAST PATINA**  
Vintage Copper



**STONECAST**  
Java Blue



**STONECAST**  
Berry Red



**STONECAST AQUEOUS**  
Lagoon



**STONECAST PATINA**  
Burnished Green





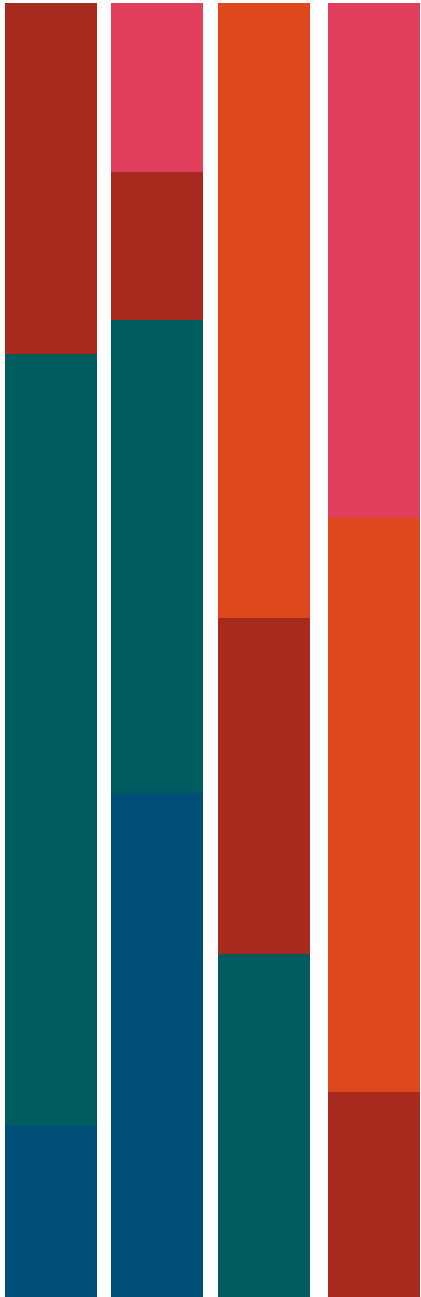
# IMMERSIVE

**As designers draw inspiration from nature they're becoming bolder with colour, using the deeply saturated tones found in exotic or barren landscapes.**

Spaces also become more immersive, surrounding the consumer with the natural world and blurring the lines between inside and outside. Find deep natural tones in Patina, such as Rust Red and Rustic Teal or the striking Chroma Marine. Pair these cooler strong tones with warm Stonecast Spiced Orange, or to create a exotic botanical vibe introduce the pinks of Stonecast and Raku.







Use deeply saturated teals and blues to create a tropical palette. Introduce a botanical vibe with pops of rich reds, pinks and oranges.



**STUDIO PRINTS HOMESPUN CHROMA**  
Marine



**STUDIO PRINTS RAKU**  
Rose Quartz Pink



**STONECAST PATINA**  
Rust Red



**STONECAST PATINA**  
Rustic Teal



**STONECAST**  
Spiced Orange



**STONECAST**  
Petal Pink

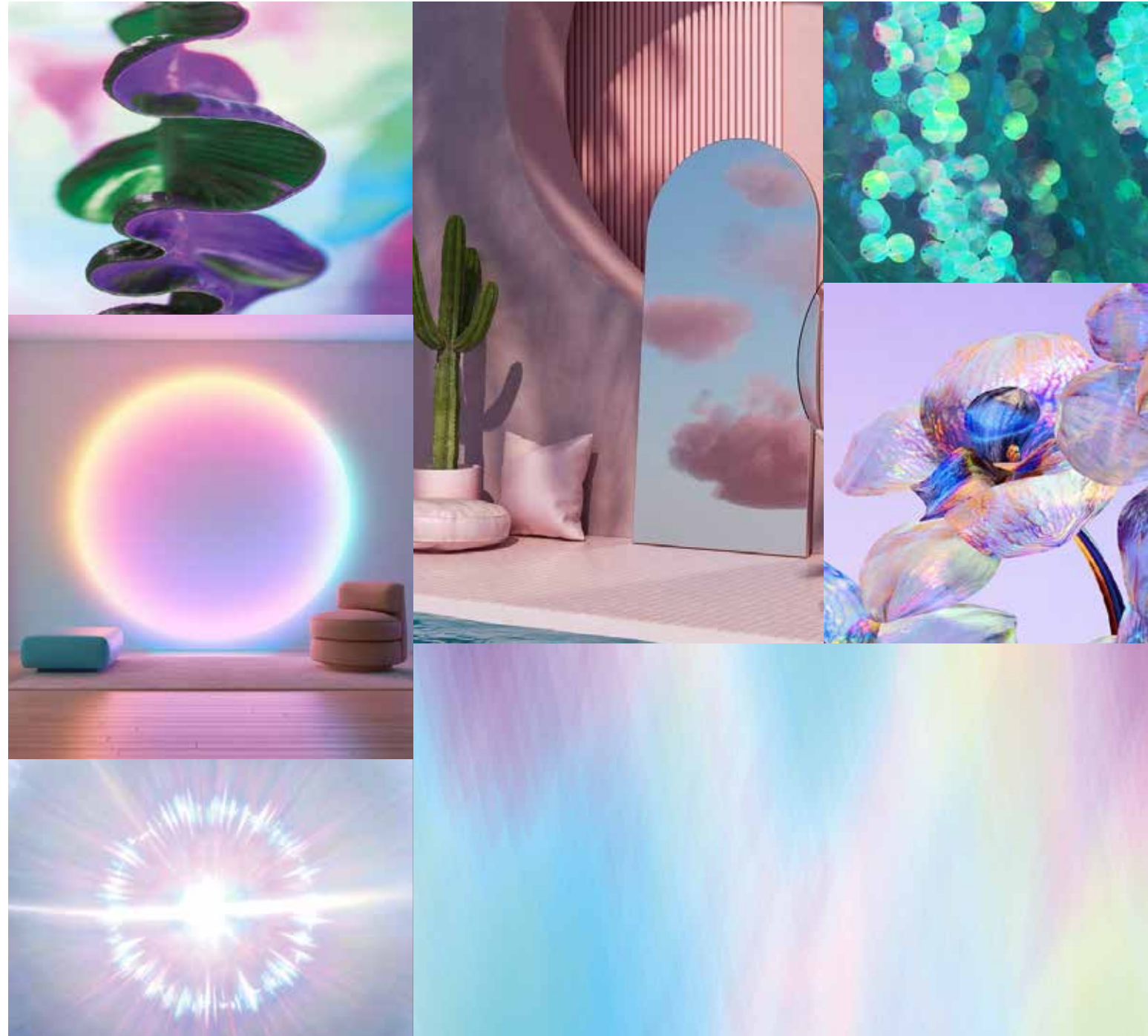




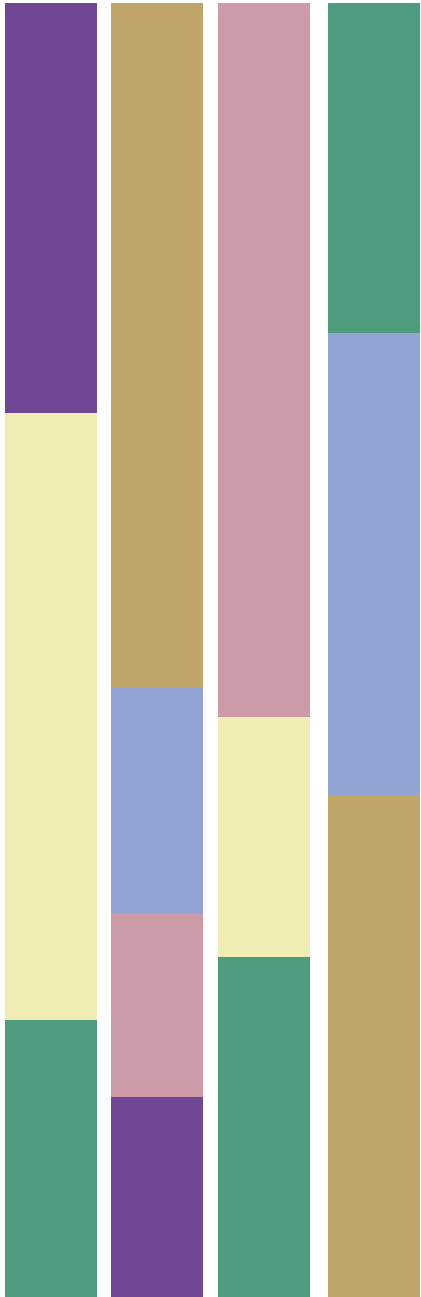
# IMMERSIVE

**Digital real tones and colours immerse you in an AI reality, where chalky pastels blend with ethereal gradients for a futuristic table.**

This vision of a digital utopia blurs the boundary between virtual and reality creating an otherworldly experience. Mix Stonecast Lavender with Mint and Stonecast Aqueous Bayou for an eclectic style.







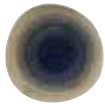
Dive into the digital metaverse with this unique colour story that merges dreamy lavender and petal pink with fresh mint.



**STONECAST**  
Mint



**STONECAST ACCENTS**  
Petal Pink



**STONECAST AQUEOUS**  
Bayou



**STONECAST**  
Cornflower Blue



**STUDIO PRINTS RAKU**  
Topaz Blue



**EMERGE**  
Oslo Blue



**STONECAST**  
Lavender





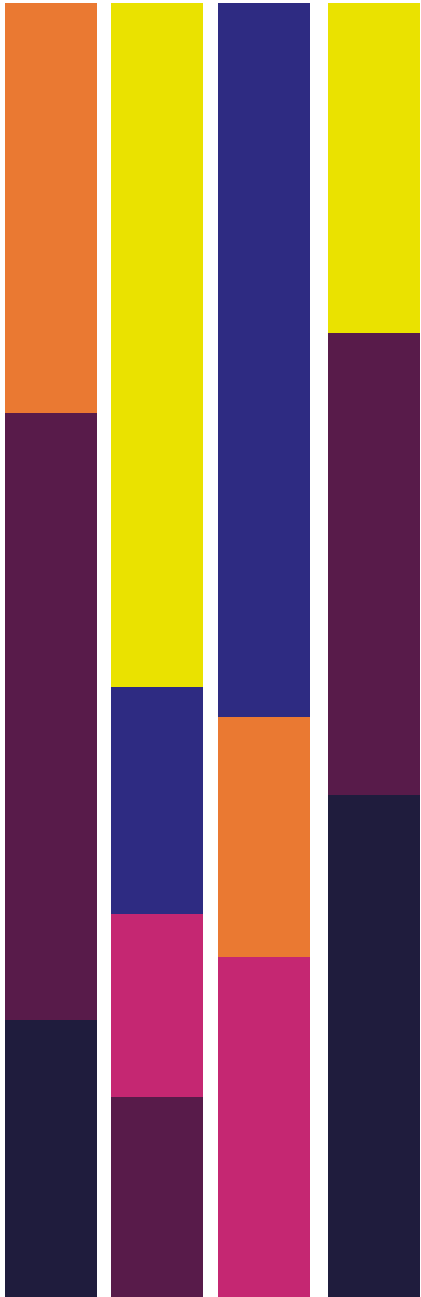
# IMMERSIVE

A celebration of nocturnal activities lit by neon glows, this colour story dives into dark mystical purples contrasted with bright altered reality experiences.

Create this dramatic colour story by picking out pieces that add drama to the table. Envisage Cascade and Sudio Prints Astro add a futuristic blue and pair well with Stonecast Patina Deep Purple and Stonecast Mustard Yellow.







Create this after dark colour story by mixing dark purples and astro blues with bright oranges and yellows for that neon glow.



**STONECAST PATINA**  
Deep Purple



**STUDIO PRINTS ASTRO**  
Blue



**STONECAST AQUEOUS**  
Bayou



**STUDIO PRINTS HOMESPUN CHROMA**  
Carbon



**STONECAST**  
Mustard Yellow



**ENVISAGE CASCADE**  
Sapphire Blue



**STONECAST**  
Tangerine

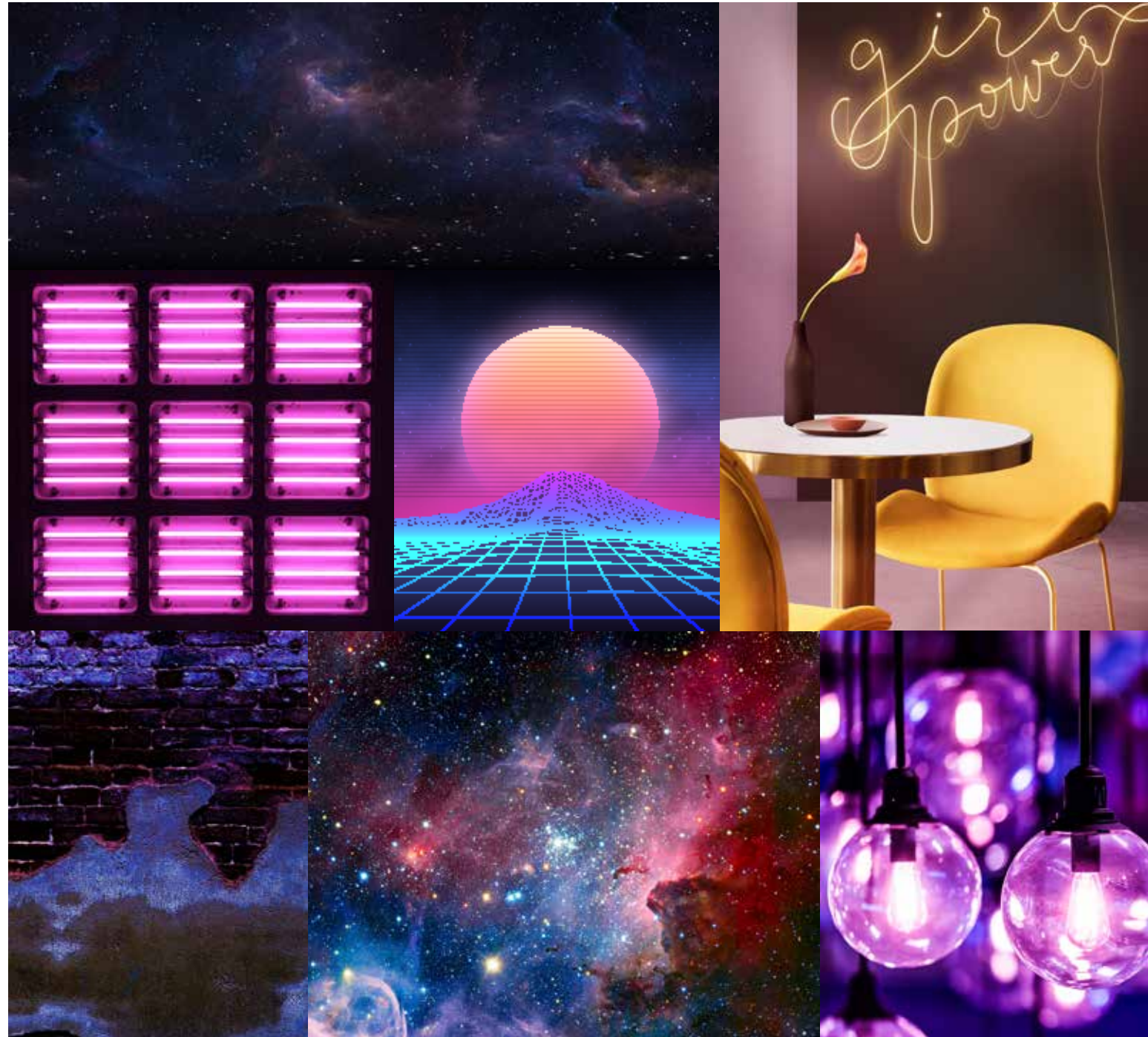




# IMMERSIVE

As AI revolutionises all industries and space tourism becomes a reality, designers are re-visualising the future, taking inspiration from the past and how the age of today was imagined in the futuristic illustrations of the 1950s and 1960s.

The result is a playful revival of abstract space age design, with bold and empowering colour palettes. Mix the dark tones of Patina Cobalt and Deep Purple with Raku Quartz Pink and Stonecast Lavender to create a cosmic palette. Add a pop of warmth with Stonecast Mustard Seed, a perfect retro shade for the trend Back to the Future.







For a cosmic palette use deep purples and rich pinks. Brighten up the futuristic look with fun pops of orange and yellow.



**STONECAST**  
Mustard Seed Yellow



**STUDIO PRINTS ASTRO**  
Blue



**STUDIO PRINTS RAKU**  
Rose Quartz Pink



**STONECAST**  
Lavender



**STONECAST PATINA**  
Deep Purple



**INKED TIDE**  
Black

